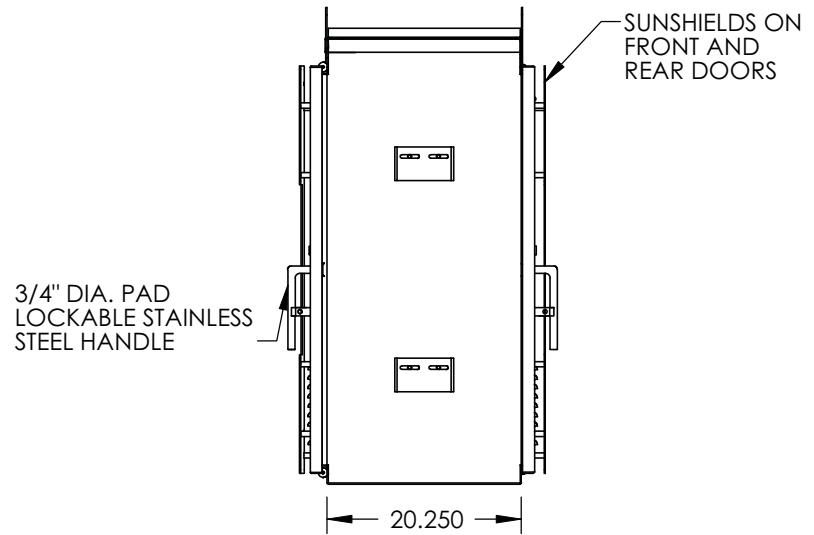
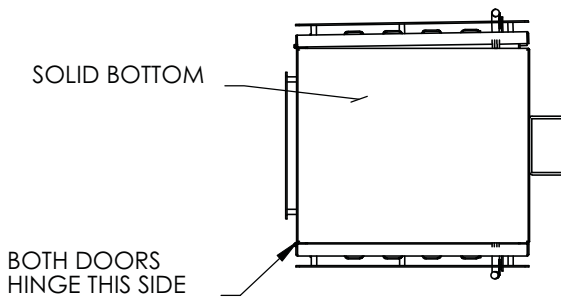


FRONT VIEW




RIGHT SIDE VIEW



BOTTOM VIEW

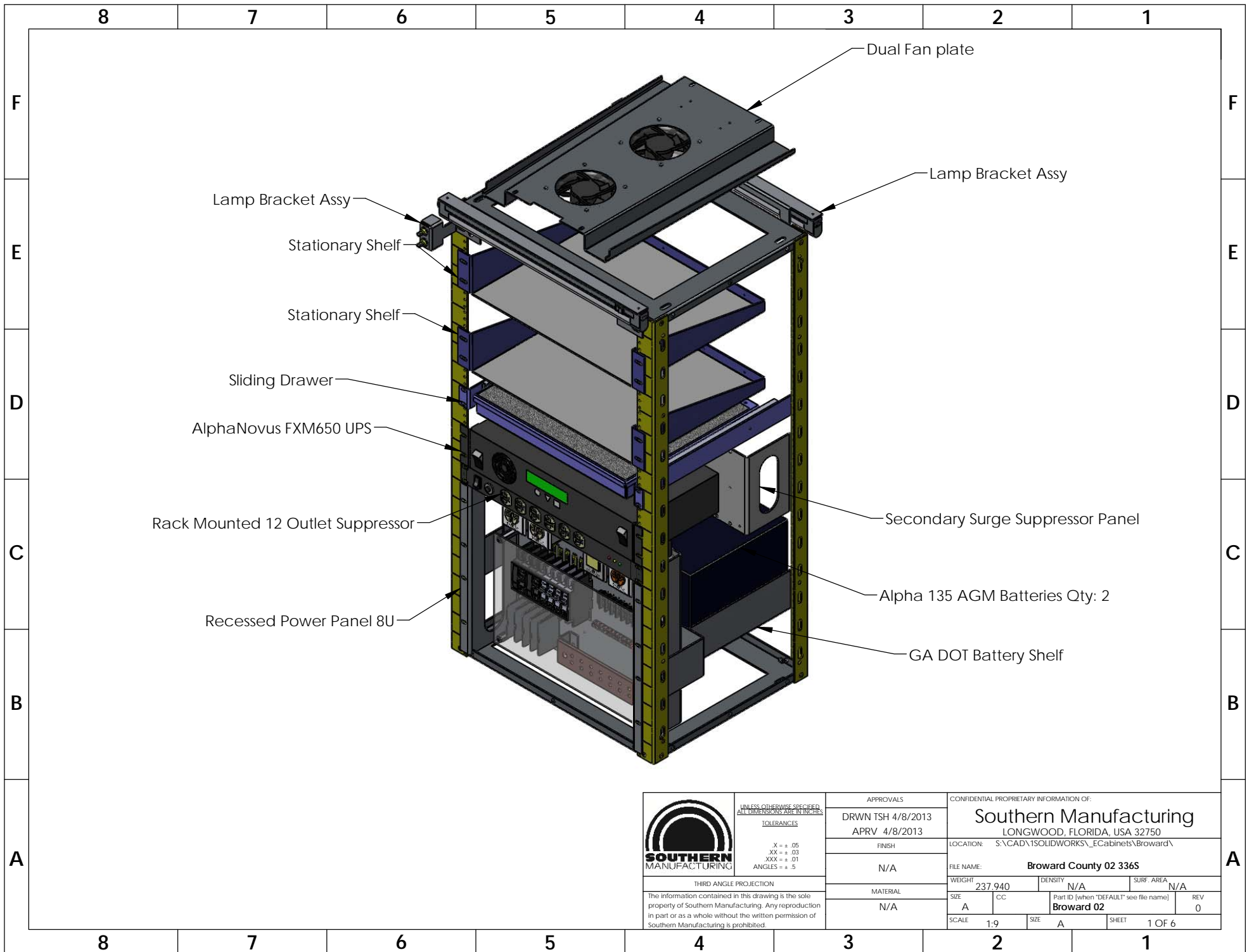
NOTES:


1. CABINET AND SUNSHIELDS ARE CONSTRUCTED FROM .125" THICK 5052 H-32 ALUMINUM, MILL FINISH, TO NEMA 3R STANDARDS AND IS FOR POLE MOUNTING.
2. FRONT DOOR IS HINGED ON THE LEFT (AS VIEWED FROM THE FRONT), REAR DOOR IS HINGED ON THE RIGHT (AS VIEWED FROM THE REAR).
3. BOTH DOORS HAVE LOUVERS WITH 10" X 16" METAL AIR FILTERS AND LOUVERED FILTER COVERS, THREE POINT LATCHING, TWO POSITION DOOR STOP RODS (90 AND 120 DEGREES), A 3/4" DIA. STAINLESS STEEL PAD - LOCKABLE HANDLE, #2A MAIN DOOR LOCKS, DOCUMENT POUCH BRACKETS (WITH ONE DOCUMENT POUCH ON REAR DOOR), AND NEOPRENE GASKET ALL AROUND.
4. CABINET HAS THREE 14 GA. STAINLESS STEEL HINGES PER DOOR, HINGES ARE CONCEALED TO PREVENT REMOVAL WHILE DOOR IS CLOSED.
5. CABINET HAS (1) 19" EIA RACK APPROX. 21.25"W X 16.25"D X 40" H (21 RU), WITH FRONT AND REAR DOOR SWITCH / LAMP BRACKETS.
6. CABINET HAS A FULL SET OF SUNSHIELDS FOR A POLE MOUNTED CABINET (FRONT & REAR DOORS, LEFT SIDE, AND TOP). SIDE AND DOOR SUNSHIELDS ARE ATTACHED WITH BOLTS AND 1" SPACERS INTO PRESS-IN INSERTS. TOP SUNSHIELD IS ATTACHED TO Z-BRACKETS (Z-BRACKETS WELDED TO CABINET TOP). ALL BOLTS ARE TAMPER PROOF, STAINLESS STEEL. (SUNSHIELD NOT PROVIDED FOR POLE MOUNT SIDE OF CABINET)
7. CABINET HAS FAN PLENUM PLATE FOR DUAL 4" FANS.
8. CABINET HAS POLE MOUNTING STIFFENER CHANNELS ON INSIDE OF BODY AND POLE MOUNTING BRACKETS MOUNTED ON THE OUTSIDE.
9. ALL HARDWARE IS STAINLESS STEEL.

 <p>Southern Manufacturing 501 Herndon Ave Orlando, Fl. 32803 ph: 407-894-8851 fx: 407-894-5373</p>	NAME	DATE	SOUTHERN MANUFACTURING	
	DRAWN By: LAB	5/20/2010		
CHECKED:			336S POLE MOUNT SUBMITTAL	
MATERIAL: 5052H-32 ALUMINUM .125"	MFG APPR:		336S SUBMITTAL	
FINISH:	Cust APPR:		Scale: 1:20	Sheet 1
				Rev: 0
				SIZE A

PROPRIETARY AND CONFIDENTIAL

The information contained in this drawing is the sole property of Southern Manufacturing. Any reproduction in part or as a whole without the written permission of Southern Manufacturing is prohibited.

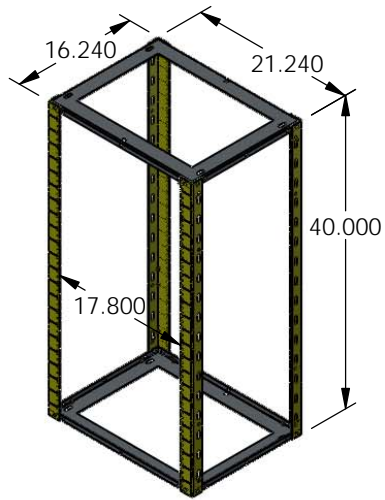


 <p>SOUTHERN MANUFACTURING</p> <p>UNLESS OTHERWISE SPECIFIED, ALL DIMENSIONS ARE IN INCHES.</p> <p><u>TOLERANCES</u></p> <p>.X = ± .06 .XX = ± .03 .XXX = ± .01 ANGLES = ± .5</p> <p>THIRD ANGLE PROJECTION</p> <p>The information contained in this drawing is the sole property of Southern Manufacturing. Any reproduction in part or as a whole without the written permission of Southern Manufacturing is prohibited.</p>	<p>APPROVALS</p> <p>DRWN TSH 4/8/2013 APRV 4/8/2013</p>		<p>CONFIDENTIAL PROPRIETARY INFORMATION OF:</p> <p>Southern Manufacturing LONGWOOD, FLORIDA, USA 32750</p>		
	<p>FINISH</p> <p>N/A</p>		<p>LOCATION: S:\CAD\1SOLIDWORKS_ECabinets\Broward\</p>		
	<p>MATERIAL</p> <p>N/A</p>		<p>FILE NAME: Broward County 02 336S</p>		
	<p>SCALE</p> <p>1:9</p>		<p>WEIGHT 237.940 DENSITY N/A SURF. AREA N/A</p> <p>SIZE A CC Part ID (when 'DEFAULT' see file name) REV 0</p> <p>Broward 02</p> <p>SCALE 1:9 SIZE A SHEET 1 OF 6</p>		

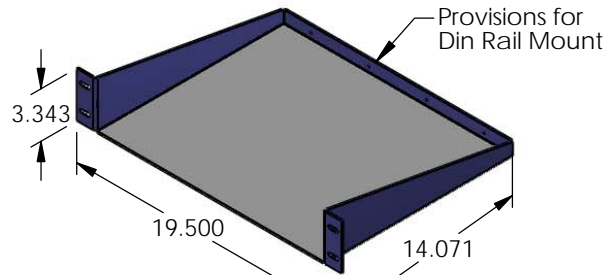
8 7 6 5 4 3 2 1

F

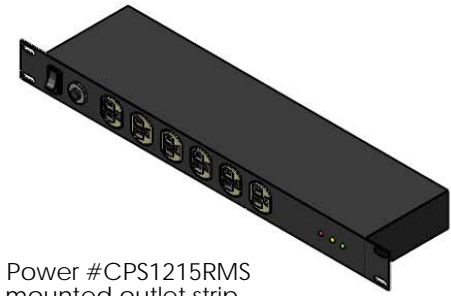
F



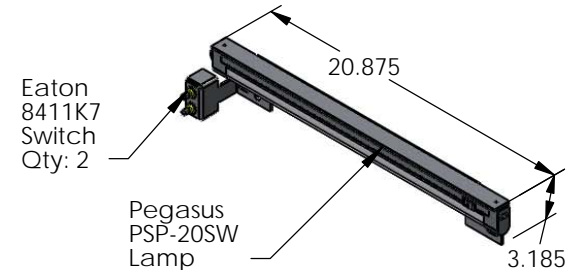
11 gauge Rack Assy
336S Rack



Stationary Shelf



Cyber Power #CPS1215RMS
Rack mounted outlet strip



Eaton
8411K7
Switch
Qty: 2

Pegasus
PSP-20SW
Lamp

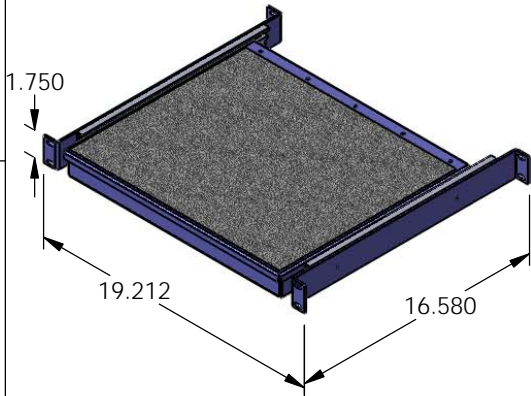
336S Lamp
Bracket Assy

E

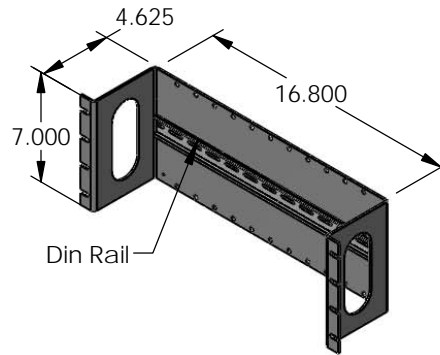
E

D

D

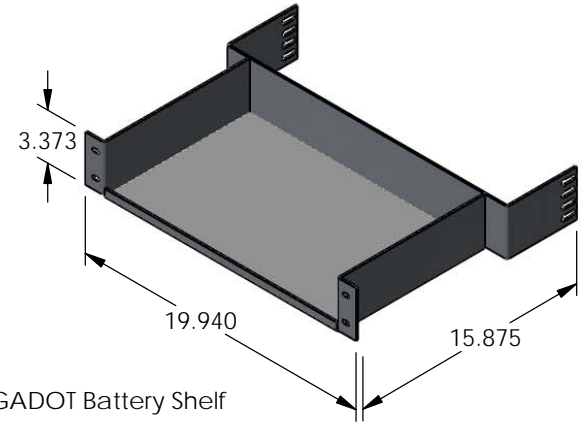


336S Sliding Drawer



Din Rail

Secondary Surge
Suppressor Panel
(Din)



GADOT Battery Shelf

C

C


B

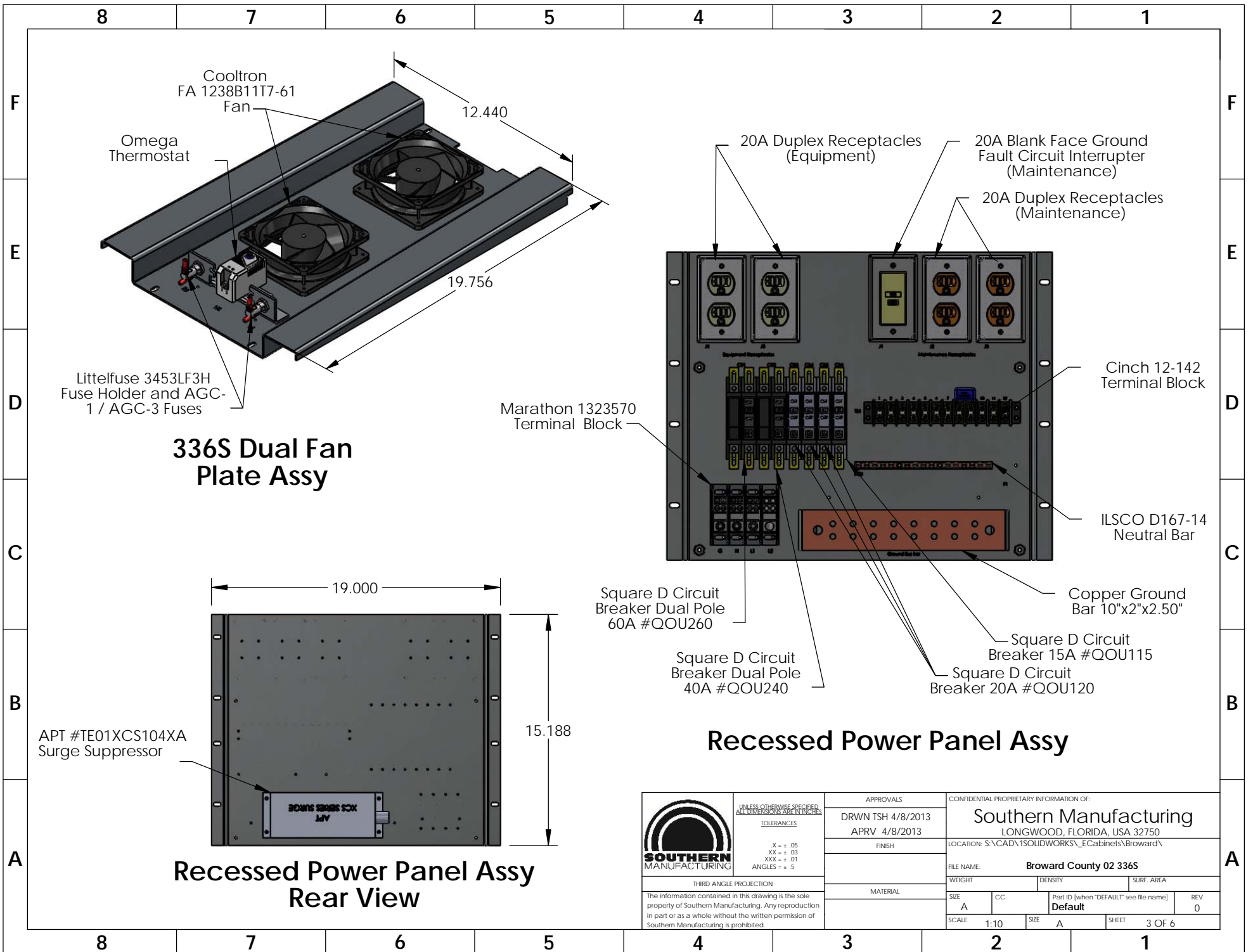
B


A

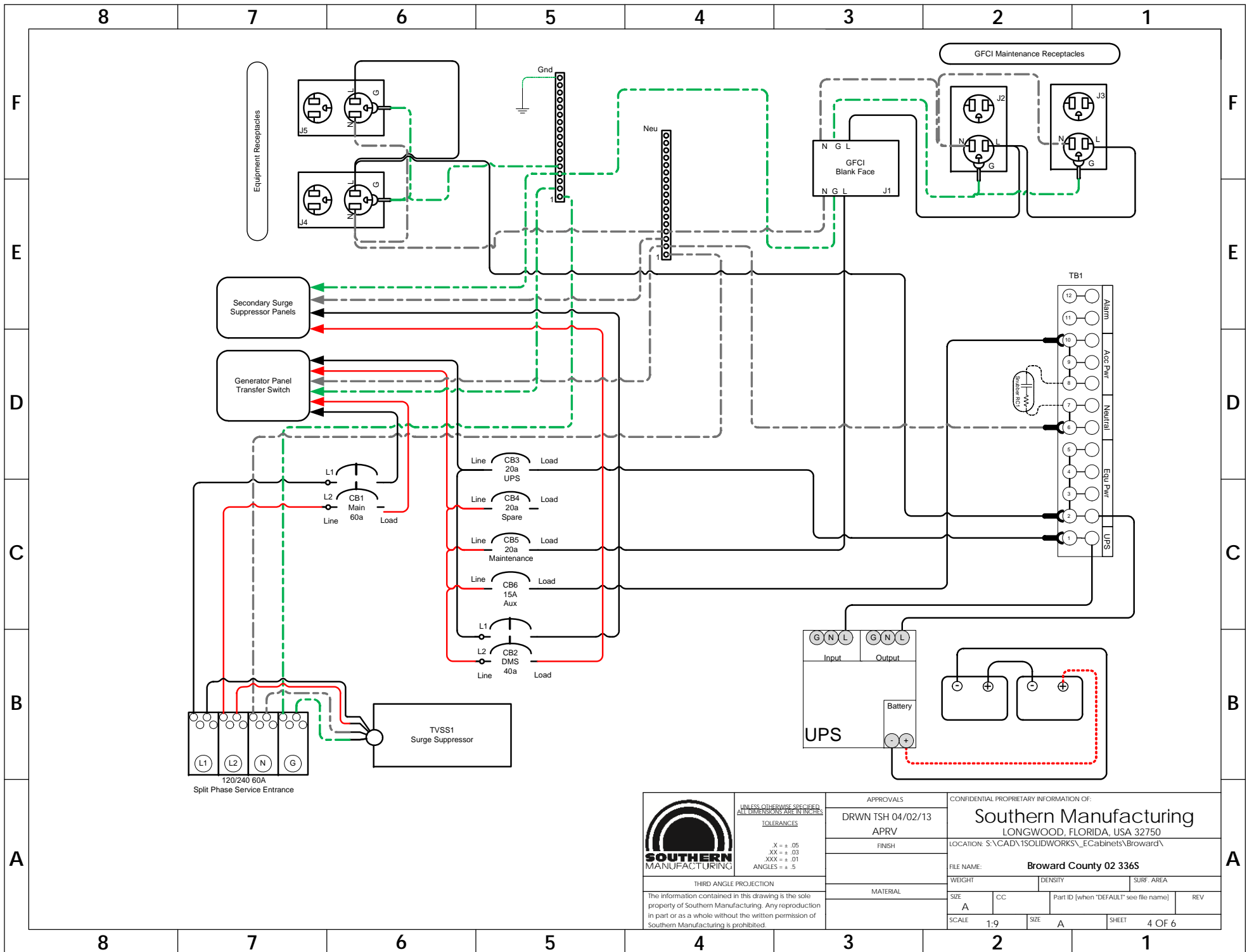
A

8 7 6 5 4 3 2 1

 <p>SOUTHERN MANUFACTURING</p> <p>THIRD ANGLE PROJECTION</p> <p>The information contained in this drawing is the sole property of Southern Manufacturing. Any reproduction in part or as a whole without the written permission of Southern Manufacturing is prohibited.</p>	<p>UNLESS OTHERWISE SPECIFIED, ALL DIMENSIONS ARE IN INCHES.</p> <p><u>TOLERANCES</u></p> <p>.X = ± .06 .XX = ± .03 .XXX = ± .01 ANGLES = ± .5</p>	<p>APPROVALS</p> <p>DRWN TSH 4/8/2013 APRV 4/8/2013</p>	<p>CONFIDENTIAL PROPRIETARY INFORMATION OF:</p> <p>Southern Manufacturing LONGWOOD, FLORIDA, USA 32750</p> <p>LOCATION: S:\CAD\1SOLIDWORKS_ECabinets\Broward\</p>	
	<p><u>FINISH</u></p>	<p>FILE NAME: Broward County 02 336S</p>	<p>WEIGHT</p> <p>DENSITY</p> <p>SURF. AREA</p>	<p>Part ID (when "DEFAULT" see file name)</p> <p>REV 0</p>
	<p><u>MATERIAL</u></p>	<p>SIZE A</p> <p>CC</p> <p>SCALE 1:10</p>	<p>SIZE A</p> <p>SHEET 2 OF 6</p>	<p>Default</p>
	<p>SCALE 1:10</p>	<p>SIZE A</p>	<p>SHEET 2 OF 6</p>	



 <p>SOUTHERN MANUFACTURING</p> <p>THIRD ANGLE PROJECTION</p> <p>The information contained in this drawing is the sole property of Southern Manufacturing. Any reproduction in part or as a whole without the written permission of Southern Manufacturing is prohibited.</p>	<p>UNLESS OTHERWISE SPECIFIED, TOLERANCES ARE IN INCHES:</p> <p>.X = ± .06 .XX = ± .03 .XXX = ± .01 ANGLES = ± .5</p>	<p>APPROVALS</p> <p>DRWN TSH 4/8/2013 APRV 4/8/2013</p>	<p>CONFIDENTIAL PROPRIETARY INFORMATION OF:</p> <p>Southern Manufacturing LONGWOOD, FLORIDA, USA 32750</p> <p>LOCATION: S:\CAD\SOLIDWORKS_ECabinets\Broward\</p>	
	<p>MATERIAL</p>	<p>FINISH</p>	<p>FILE NAME: Broward County 02 336S</p>	
	<p>SIZE</p> <p>A</p>	<p>CC</p>	<p>DENSITY</p>	<p>SURF. AREA</p>
	<p>SCALE 1:10</p>	<p>SIZE A</p>	<p>SHEET 3 OF 6</p>	<p>Part ID (when "DEFAULT" see file name) Default</p> <p>REV 0</p>



UNLESS OTHERWISE SPECIFIED
ALL DIMENSIONS ARE IN INCHES

TOLERANCES

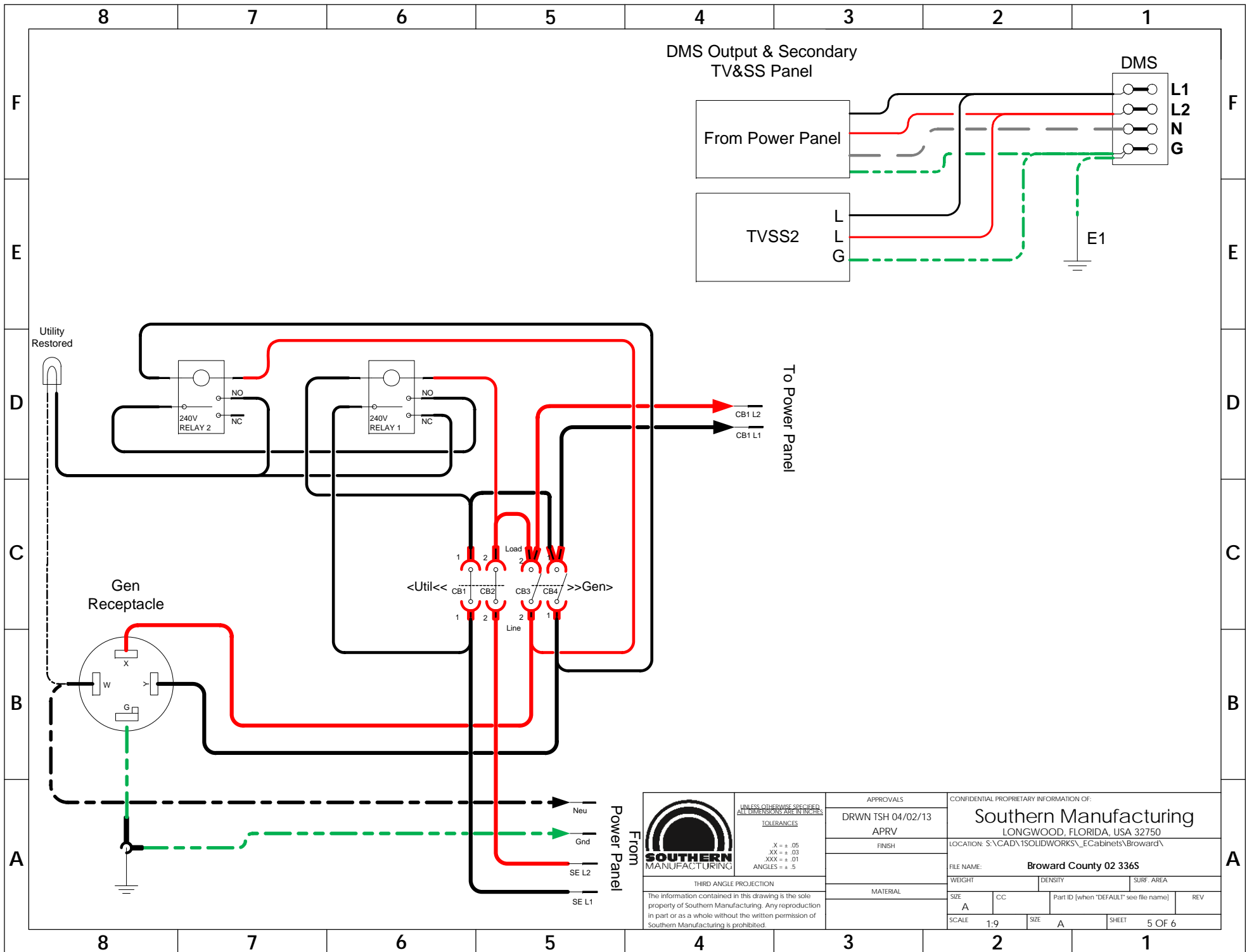
.X = ± .05
.XX = ± .03
.XXX = ± .01
ANGLES = ± .5

THIRD ANGLE PROJECTION

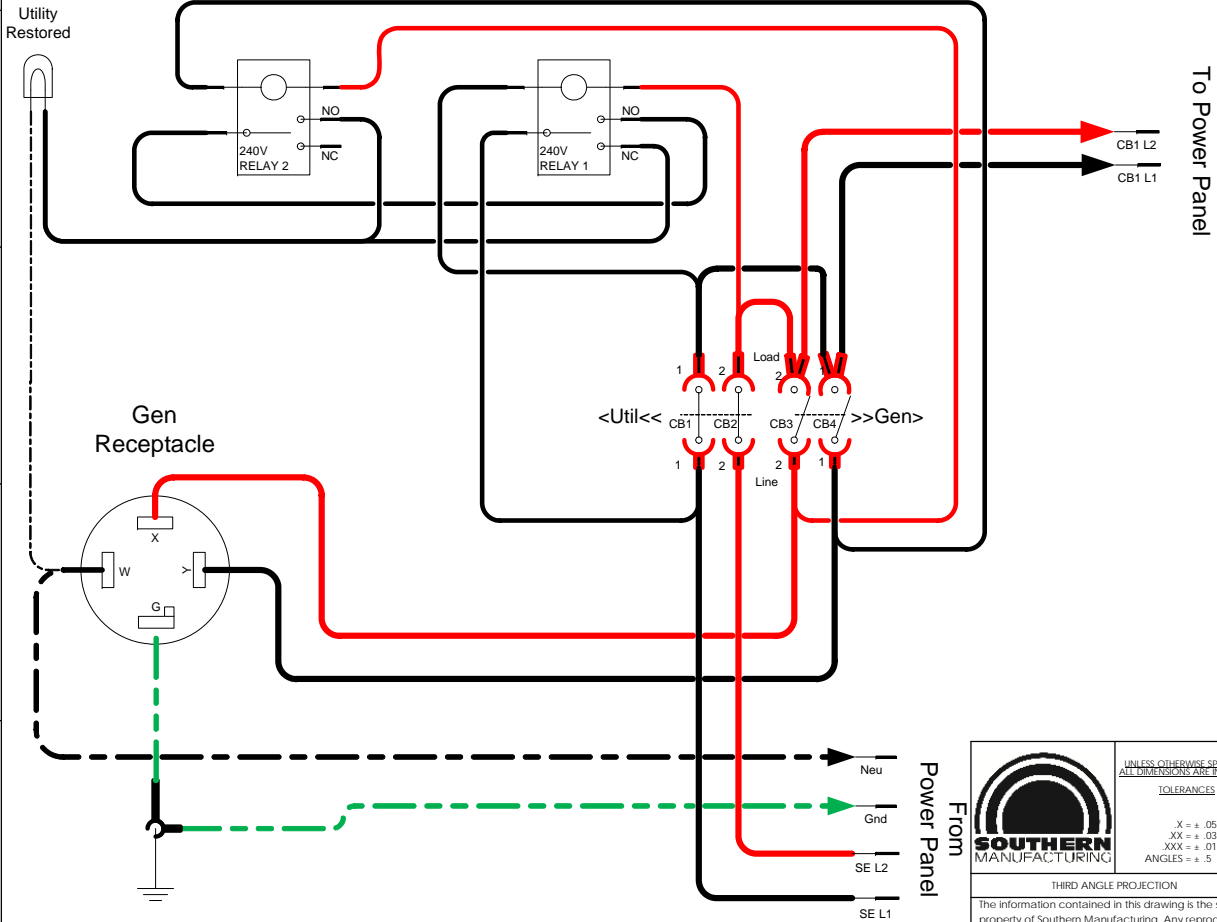
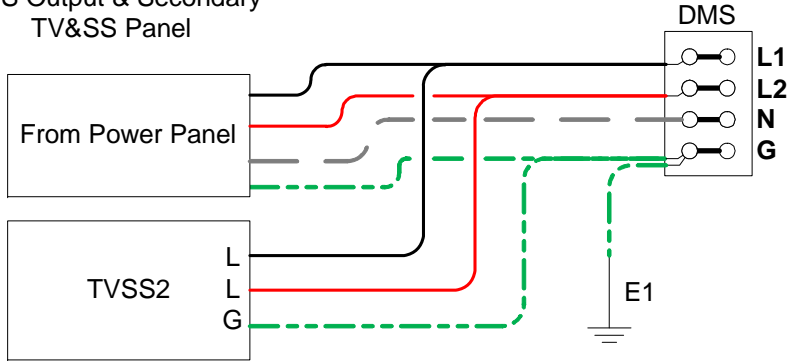
The information contained in this drawing is the sole property of Southern Manufacturing. Any reproduction in part or as a whole without the written permission of Southern Manufacturing is prohibited.

APPROVALS	
DRWN TSH 04/02/13	
APRV	
FINISH	
MATERIAL	

CONFIDENTIAL PROPRIETARY INFORMATION OF:			
Southern Manufacturing			
LONGWOOD, FLORIDA, USA 32750			
LOCATION: S:\CAD\ISOLIDWORKS_ECabinets\Broward\			
FILE NAME: Broward County 02 336S			
WEIGHT	DENSITY	SURF. AREA	
SIZE	CC	Part ID (when "DEFAULT" see file name)	REV
SCALE 1:9	SIZE A	SHEET 4 OF 6	



DMS Output & Secondary TV&SS Panel



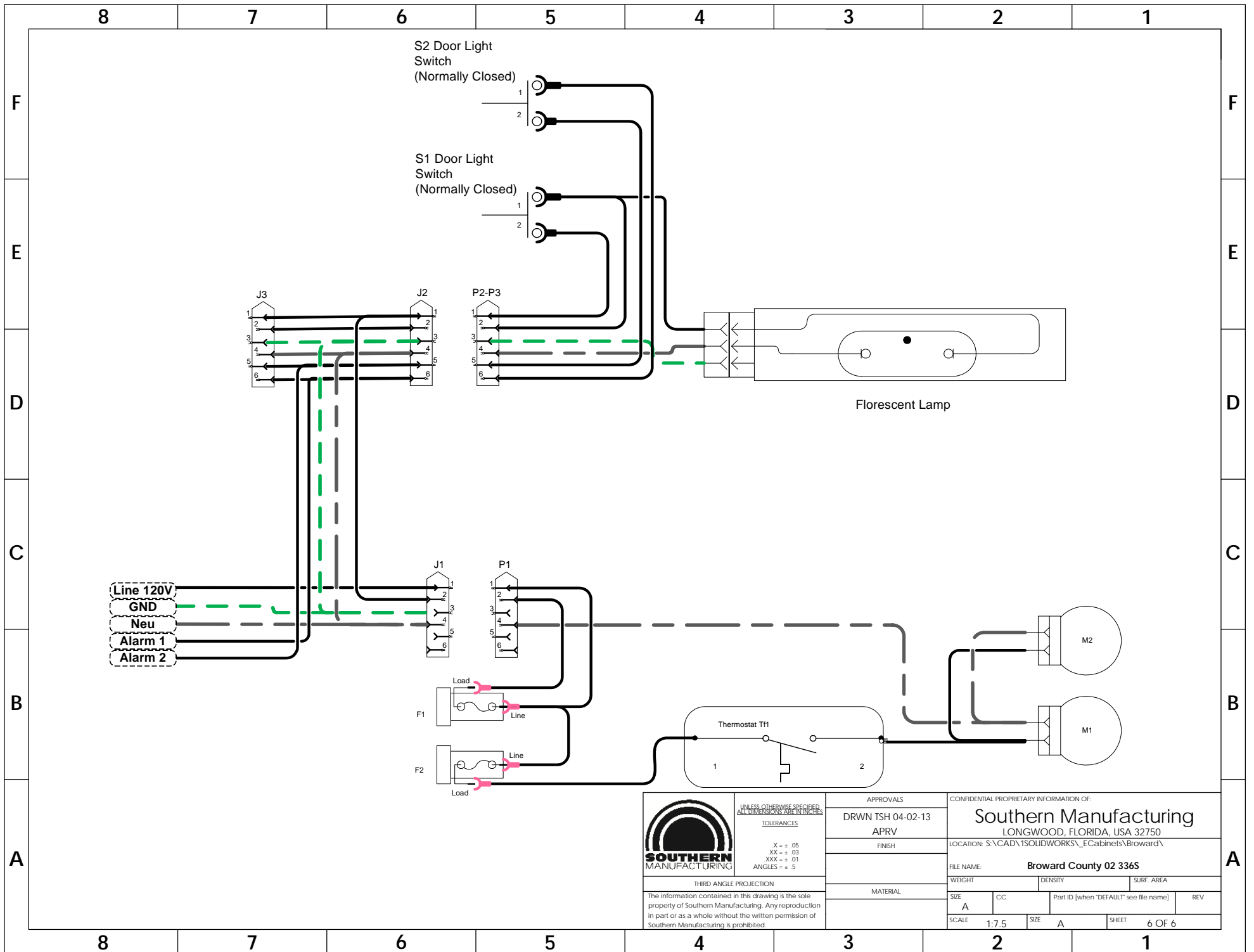
UNLESS OTHERWISE SPECIFIED, TOLERANCES ARE IN INCHES:


.X	= ± .05
.XX	= ± .03
.XXX	= ± .01
ANGLES	= ± .5

THIRD ANGLE PROJECTION
 The information contained in this drawing is the sole property of Southern Manufacturing. Any reproduction in part or as a whole without the written permission of Southern Manufacturing is prohibited.

APPROVALS	
DRWN TSH 04/02/13	APRV
FINISH	
MATERIAL	

CONFIDENTIAL PROPRIETARY INFORMATION OF:			
Southern Manufacturing			
LONGWOOD, FLORIDA, USA 32750			
LOCATION: S:\CAD\1SOLIDWORKS_ECabinets\Broward\			
FILE NAME: Broward County 02 336S			
WEIGHT	DENSITY	SURF. AREA	
SIZE	CC	Part ID (when 'DEFAULT' see file name)	REV
SCALE 1:9	SIZE A	SHEET 5 OF 6	



 <p>SOUTHERN MANUFACTURING</p> <p>THIRD ANGLE PROJECTION</p> <p>The information contained in this drawing is the sole property of Southern Manufacturing. Any reproduction in part or as a whole without the written permission of Southern Manufacturing is prohibited.</p>	<p>UNLESS OTHERWISE SPECIFIED, ALL DIMENSIONS ARE IN INCHES.</p> <p>TOLERANCES</p> <p>.X = ± .05 .XX = ± .03 .XXX = ± .01 ANGLES = ± .5</p>	<p>APPROVALS</p> <p>DRWN TSH 04-02-13 APRV</p>	<p>CONFIDENTIAL PROPRIETARY INFORMATION OF:</p> <p>Southern Manufacturing LONGWOOD, FLORIDA, USA 32750</p> <p>LOCATION: S:\CAD\SOLIDWORKS_ECabinets\Broward\</p>
	<p>Broward County 02 336S</p>	<p>FINISH</p>	<p>FILE NAME:</p>
	<p>MATERIAL</p>	<p>WEIGHT</p> <p>DENSITY</p> <p>SURF. AREA</p>	<p>SIZE</p> <p>CC</p> <p>Part ID (when 'DEFAULT' see file name)</p> <p>REV</p>
	<p>SCALE 1:7.5</p> <p>SIZE A</p> <p>SHEET 6 OF 6</p>		