

**NOTES**

1. CABINET IS CONSTRUCTED FROM .125" THICK 5052 H-32 ALUMINUM AND IS POLE MOUNTED.
2. CABINET HAS A FRONT AND REAR DOOR SWITCH BRACKETS AND A DUAL 4" REMOVABLE FAN PLATE .
3. CABINET HAS DOUBLE THICKNESS REINFORCEMENT CHANNELS ON THE INSIDE BOTH SIDES AND A SOLID BOTTOM FOR POLE MOUNTING (POLE MOUNTING BRACKETS ARE SHIPPED LOOSE).
4. BOTH DOOR HAVE LOUVERS WITH A 10" X 16" METAL AIR FILTER WITH LOUVER COVER , A 3/4" PAD-LOCKABLE STAINLESS STEEL HANDLE WITH THREE POINT LATCHING , A #2 LOCK , A TWO POSITION DOOR STOP , THREE STAINLESS STEEL HINGES PER DOOR , DOCUMENT POUCH BRACKETS AND TOP GASKET RETAINER ,AND IS SEALED WITH CLOSED CELL NEOPRENE GASKET .
5. CABINET HAS A 21" W X 20" DEEP 19" EIA RACK WITH A PULL OUT DRAWER , ADJUSTABLE RACK MOUNTED SHELF . TWO LAMP / DOOR SWITCH BRACKETS
6. ALL HARDWARE IS STAINLESS STEEL .
7. CABINET IS RATED 3R AND IS UL LISTED .



**Southern Manufacturing**  
 150 Hope Street  
 Longwood, FL 32750  
 ph: 407-894-8851  
 fx: 407-831-1508

MATERIAL: 5052H-32 ALUMINUM .125"

FINISH:

NAME	DATE
LAB	10/12/12
DRAWN By:	
CHECKED:	
MFG APPR:	
Cust APPR:	

**SOUTHERN MANUFACTURING CO.**

P/N: CA-30X24X24-SUBMITTAL

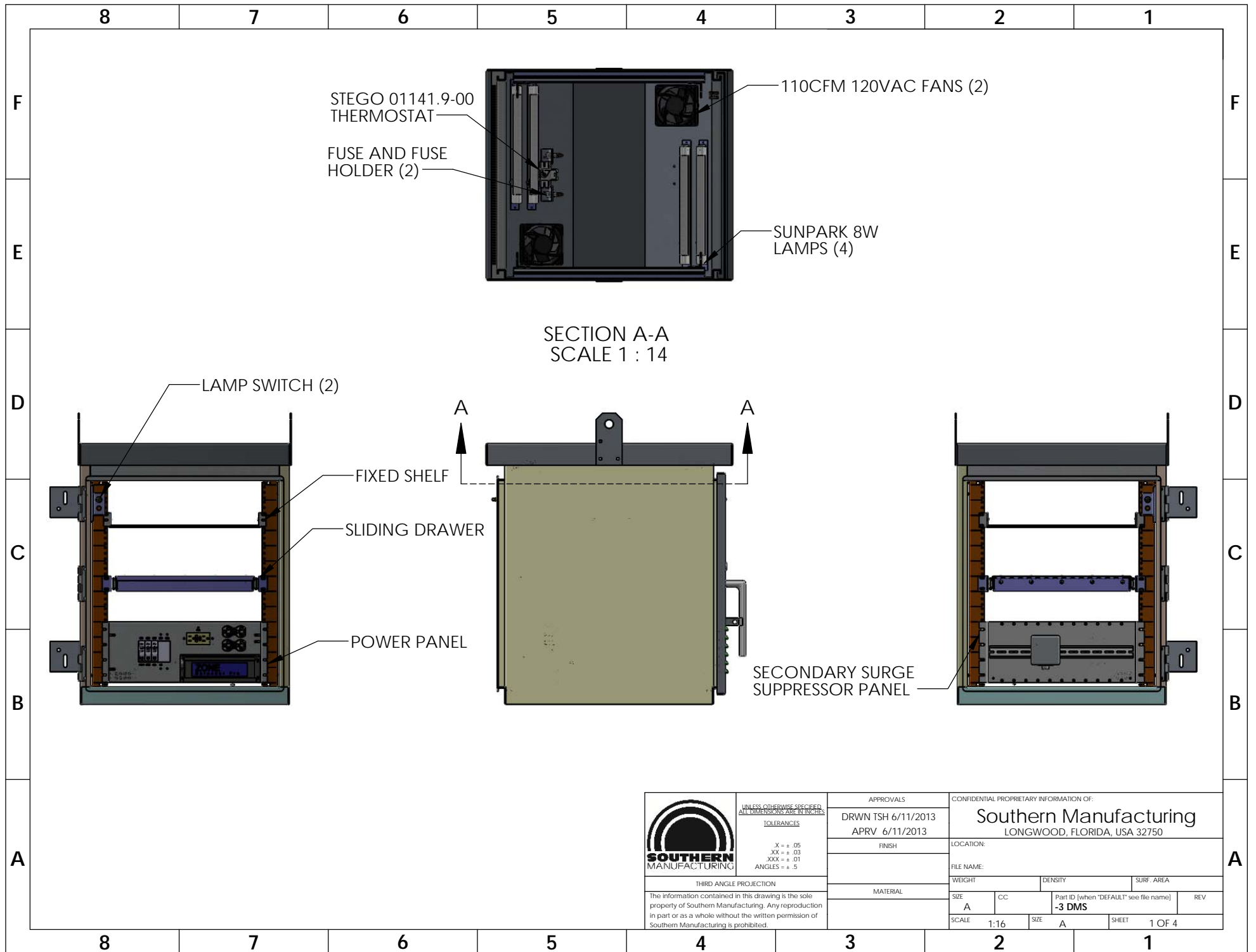
**SUBMITTAL DRAWING**

Scale: 1:16 Sheet 1 of 1


Rev: 0  
 SIZE **A**

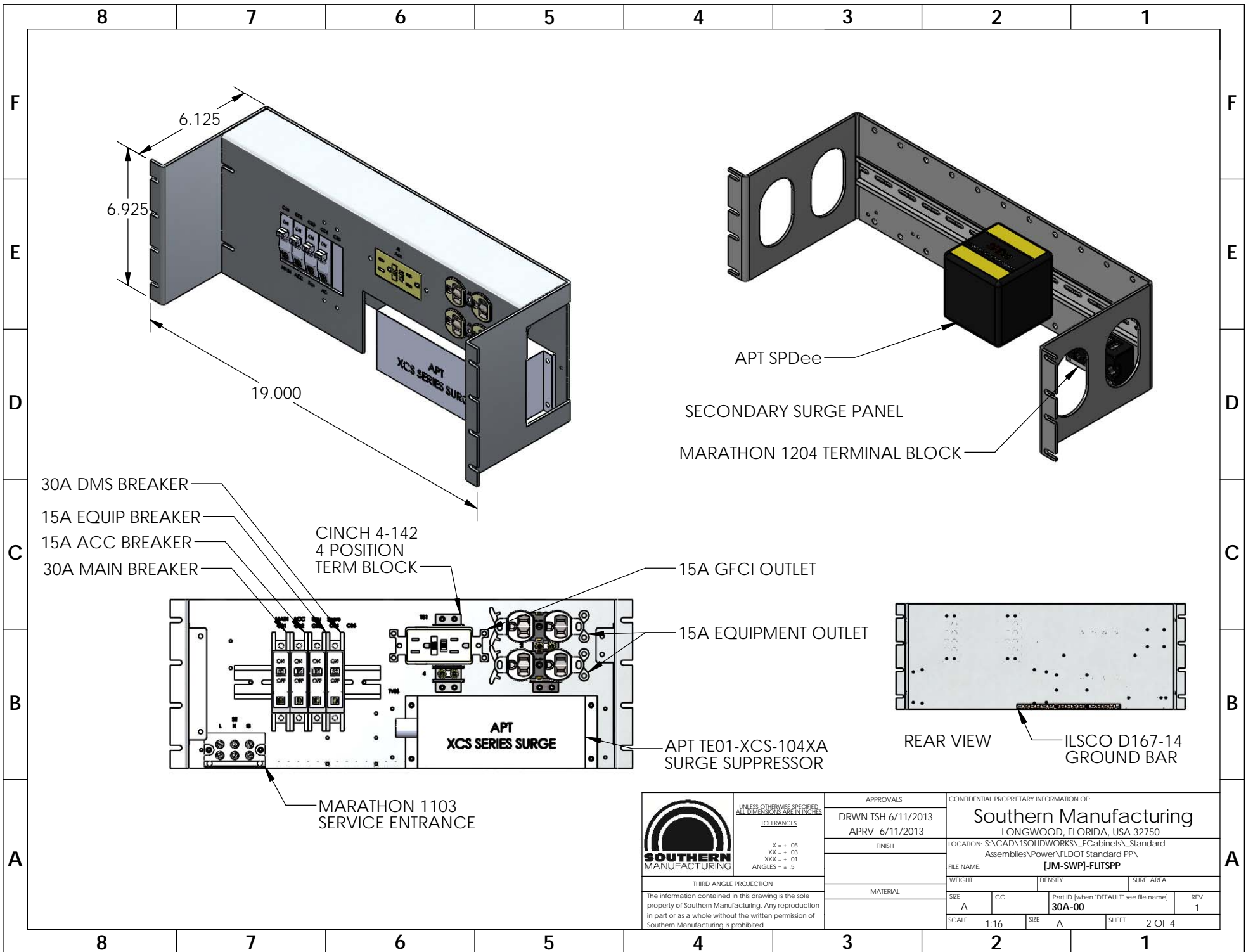
PROPRIETARY AND CONFIDENTIAL

The information contained in this drawing is the sole property of Southern Manufacturing. Any reproduction in part or as a whole without the written permission of Southern Manufacturing is prohibited.



SECTION A-A  
SCALE 1 : 14

 <p><b>SOUTHERN MANUFACTURING</b></p> <p>UNLESS OTHERWISE SPECIFIED, ALL DIMENSIONS ARE IN INCHES.</p> <p><u>TOLERANCES</u></p> <p>.X = ± .05 .XX = ± .03 .XXX = ± .01 ANGLES = ± .5</p> <p>THIRD ANGLE PROJECTION</p> <p>The information contained in this drawing is the sole property of Southern Manufacturing. Any reproduction in part or as a whole without the written permission of Southern Manufacturing is prohibited.</p>	APPROVALS		CONFIDENTIAL PROPRIETARY INFORMATION OF:		
	DRWN TSH 6/11/2013 APRV 6/11/2013		Southern Manufacturing LONGWOOD, FLORIDA, USA 32750		
	FINISH		LOCATION:		
	MATERIAL		FILE NAME:		
WEIGHT		DENSITY	SURF. AREA		
SIZE A	CC	Part ID (when "DEFAULT" see file name)		REV	
SCALE 1:16	SIZE A	SHEET 1 OF 4			



- 30A DMS BREAKER
- 15A EQUIP BREAKER
- 15A ACC BREAKER
- 30A MAIN BREAKER


CINCH 4-142  
4 POSITION  
TERM BLOCK

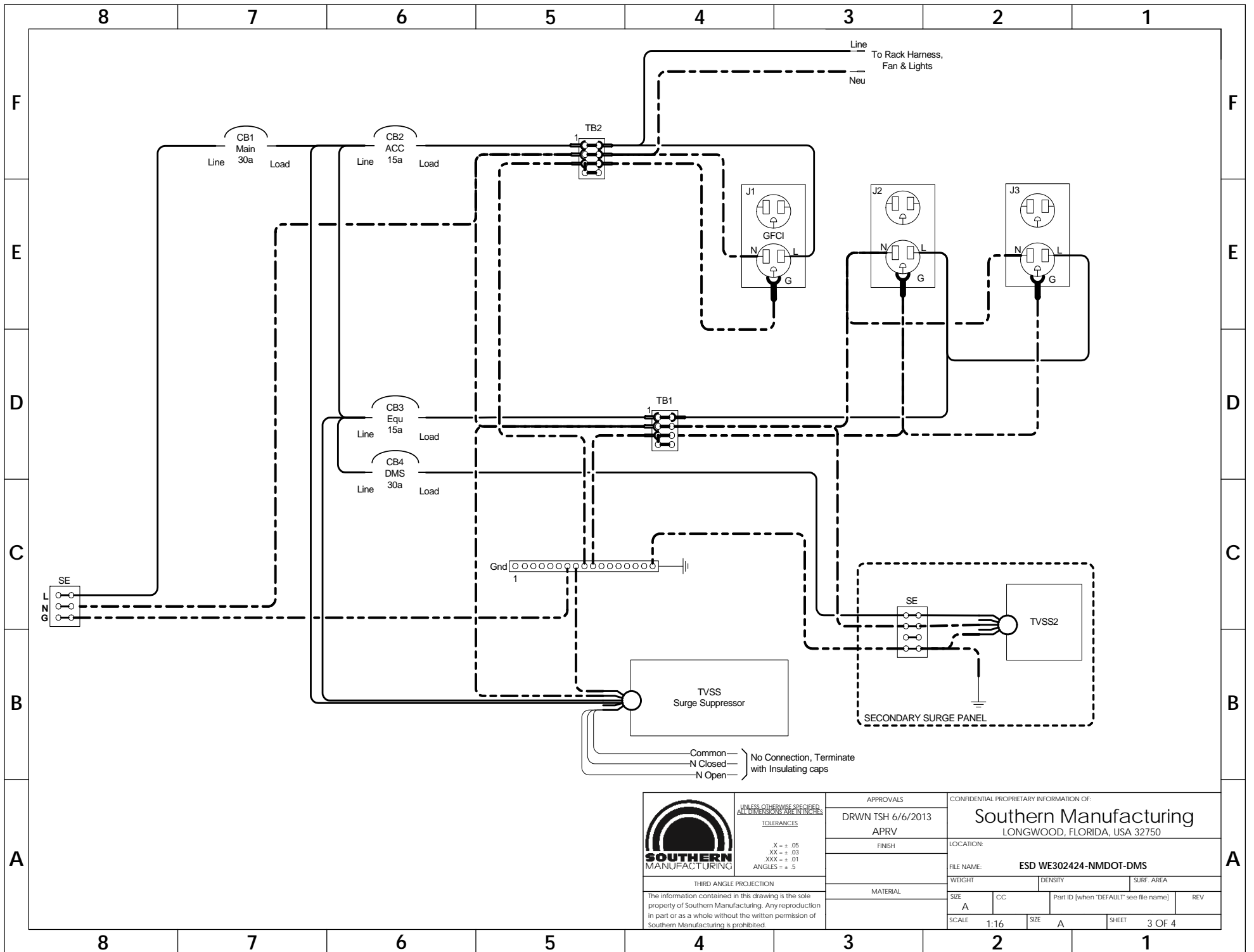
- 15A GFCI OUTLET
- 15A EQUIPMENT OUTLET

MARATHON 1103  
SERVICE ENTRANCE

APT TE01-XCS-104XA  
SURGE SUPPRESSOR

REAR VIEW  
ILSCO D167-14  
GROUND BAR

 <p><b>SOUTHERN MANUFACTURING</b></p> <p>THIRD ANGLE PROJECTION</p> <p>The information contained in this drawing is the sole property of Southern Manufacturing. Any reproduction in part or as a whole without the written permission of Southern Manufacturing is prohibited.</p>	<p>UNLESS OTHERWISE SPECIFIED, ALL DIMENSIONS ARE IN INCHES.</p> <p><b>TOLERANCES</b></p> <p>.X = ± .06 .XX = ± .03 .XXX = ± .01 ANGLES = ± .5</p>	<p>APPROVALS</p> <p>DRWN TSH 6/11/2013 APRV 6/11/2013</p>	<p>CONFIDENTIAL PROPRIETARY INFORMATION OF:</p> <p><b>Southern Manufacturing</b> LONGWOOD, FLORIDA, USA 32750</p> <p>LOCATION: S:\CAD\1SOLIDWORKS\_ECabinets\_Standard Assemblies\Power\FLDOT Standard PP\</p> <p>FILE NAME: <b>[JM-SWP]-FLITSP</b></p>
	<p><b>MATERIAL</b></p>	<p>FINISH</p>	<p>WEIGHT</p> <p>DENSITY</p> <p>SURF. AREA</p>
	<p>SIZE</p> <p>A</p>	<p>CC</p> <p>30A-00</p>	<p>Part ID (when "DEFAULT" see file name)</p> <p>REV 1</p>
	<p>SCALE 1:16</p>	<p>SIZE A</p>	<p>SHEET 2 OF 4</p>



UNLESS OTHERWISE SPECIFIED, ALL DIMENSIONS ARE IN INCHES.

**TOLERANCES**

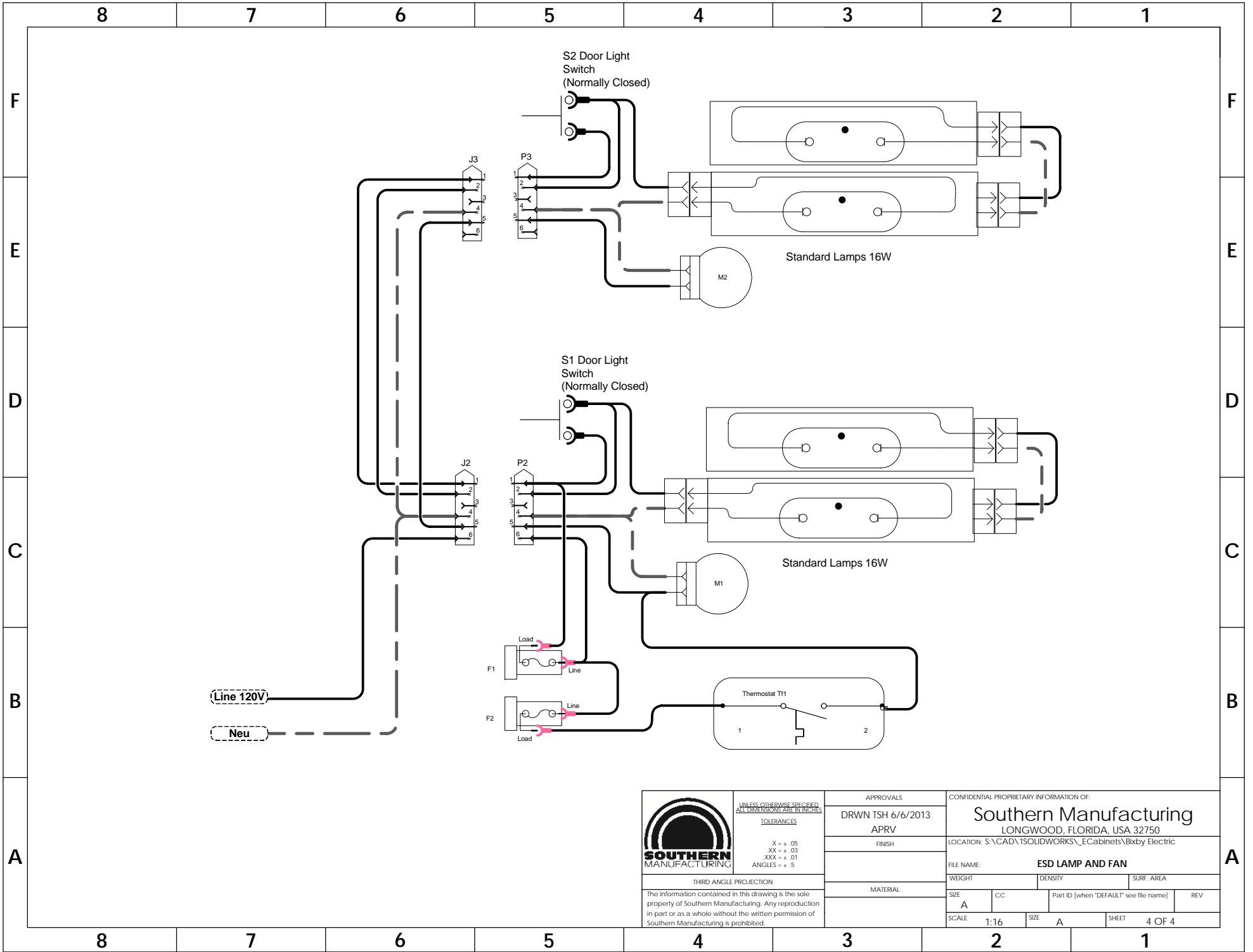
.X = ± .05  
 .XX = ± .03  
 .XXX = ± .01  
 ANGLES = ± .5


THIRD ANGLE PROJECTION

The information contained in this drawing is the sole property of Southern Manufacturing. Any reproduction in part or as a whole without the written permission of Southern Manufacturing is prohibited.

APPROVALS	
DRWN TSH 6/6/2013	APRV
FINISH	
MATERIAL	

CONFIDENTIAL PROPRIETARY INFORMATION OF:			
Southern Manufacturing			
LONGWOOD, FLORIDA, USA 32750			
LOCATION:			
FILE NAME: ESD WE302424-NMDOT-DMS			
WEIGHT	DENSITY	SURF. AREA	
SIZE A	CC	Part ID (when 'DEFAULT' see file name)	REV
SCALE 1:16	SIZE A	SHEET 3 OF 4	



 <p><b>SOUTHERN MANUFACTURING</b></p> <p>THIRD ANGLE PROJECTION</p> <p>The information contained in this drawing is the sole property of Southern Manufacturing. Any reproduction in part or as a whole without the written permission of Southern Manufacturing is prohibited.</p>	<p>UNLESS OTHERWISE SPECIFIED, ALL DIMENSIONS ARE IN INCHES.</p> <p><u>TOLERANCES</u></p> <p>.X = ± .05 .XX = ± .03 .XXX = ± .01 ANGLES = ± .5</p>	<p>APPROVALS</p> <p>DRWN TSH 6/6/2013 APRV</p> <p>FINISH</p>	<p>CONFIDENTIAL PROPRIETARY INFORMATION OF:</p> <p><b>Southern Manufacturing</b> LONGWOOD, FLORIDA, USA 32750</p> <p>LOCATION: S:\CAD\1SOLIDWORKS\_ECabinets\Bixby Electric</p>	
	<p>FILE NAME: <b>ESD LAMP AND FAN</b></p>	<p>WEIGHT</p> <p>DENSITY</p> <p>SURF. AREA</p>	<p>Part ID (when 'DEFAULT' see file name)</p> <p>REV</p>	<p>SCALE 1:16</p> <p>SIZE A</p> <p>SHEET 4 OF 4</p>
	<p>MATERIAL</p>	<p>SIZE A</p> <p>CC</p>	<p>Part ID (when 'DEFAULT' see file name)</p> <p>REV</p>	